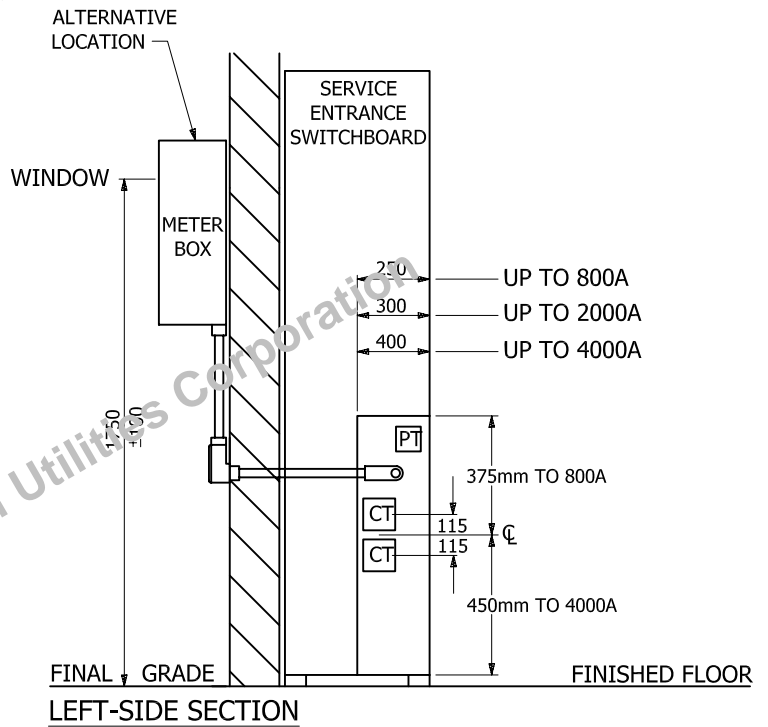


NOTES:

1. HORIZON UTILITIES CORP. APPROVED METER ENCLOSURE MAY BE PURCHASED FROM HORIZON UTILITIES CORPORATION OR SOME OTHER ELECTRICAL DISTRIBUTORS - REFERENCE HYDEL CATALOGUE NUMBER 74820585 OR HONI SPECIFICATION NUMBER DL27135D09.
2. INSTRUMENT TRANSFORMER ENCLOSURE SHALL BE EQUIPPED WITH:
 - a) HINGED DOORS FULL-HEIGHT OF COMPARTMENT
 - b) PROVISION FOR PADLOCK AND SEAL
 - c) NEUTRAL TAP WITH TWO TERMINALS
 - d) MADE OF 16 OR 14 GAUGE STEEL.
3. THE CUSTOMER SHALL SUBMIT DRAWINGS PRIOR TO START OF MANUFACTURE FOR APPROVAL OF METERING ARRANGEMENT AND SPECIFICATION OF CURRENT TRANSFORMERS SUPPLIED BY HORIZON UTILITIES CORPORATION FOR INSTALLATION AT THE FACTORY.
4. THE CUSTOMER MUST PROVIDE UNRESTRICTED ACCESS TO THE METERING AND MAY BE REQUIRED TO PURCHASE A HORIZON UTILITIES CORP. KEY BOX TO BE INSTALLED ON SITE.
5. FOR MULTIPLE METERS THE UNIT # MUST BE PERMANENTLY MARKED ON METER BASE, CONNECTED SERVICE PANEL AND SERVICE DISCONNECT.



DRAWING STATUS	BY	DATE DD/MM/YY
DRAWN:	JM	27/06/07
CHECKED:	AV	15/09/05
APPROVED:	CR	15/09/05

**TRANSFORMER-TYPE SWITCHBOARD
METERING 3-PHASE**

400A-600A 347/600V OR 400A-1600A 120/208V
LINEAR DIMENSIONS SHOWN IN MILLIMETERS

DRAWINGS
NOT TO SCALE

DRAWING #	SHEET #	REVISION #
27-12	1	0

REFERENCE DRAWINGS: