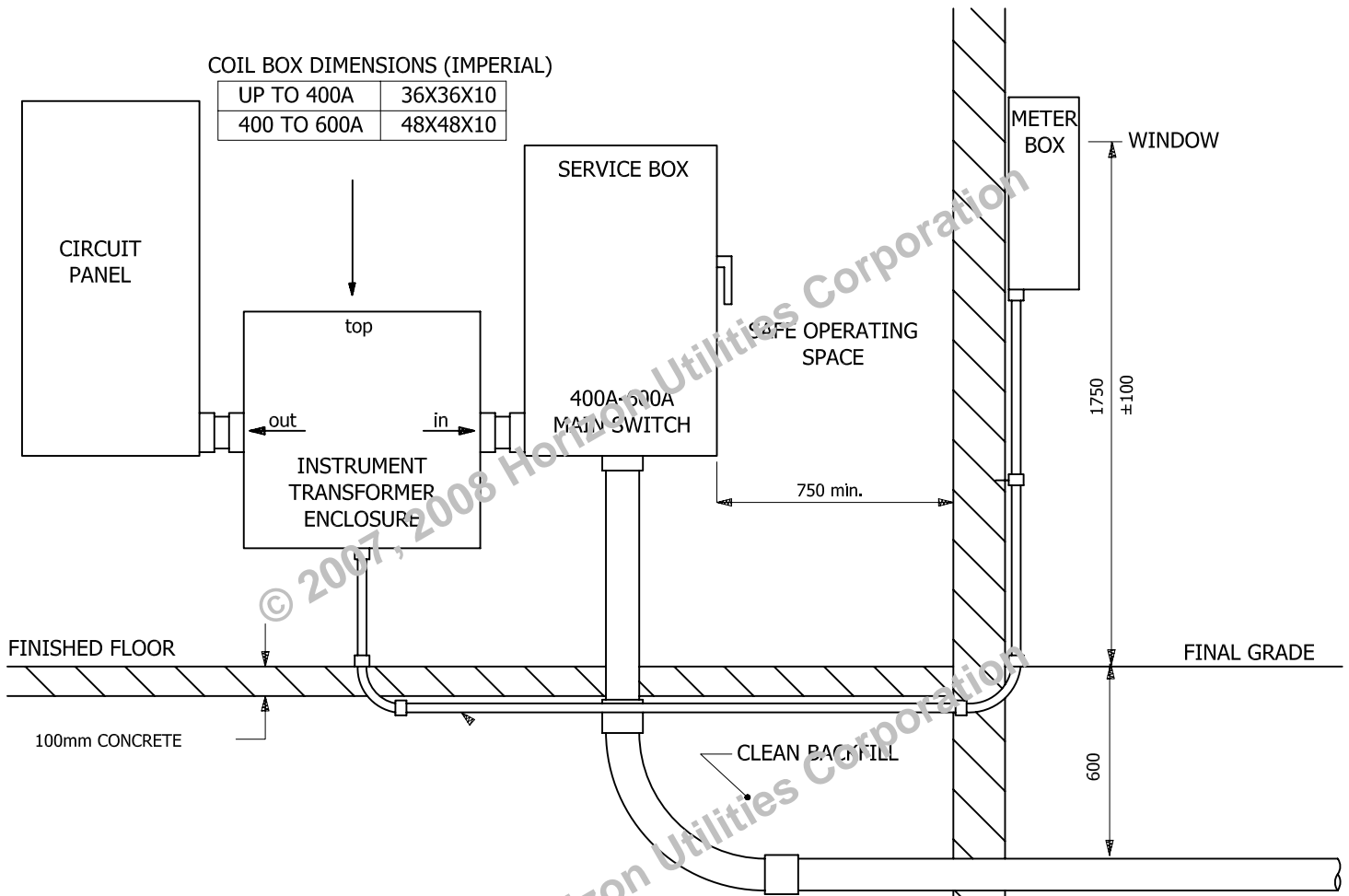


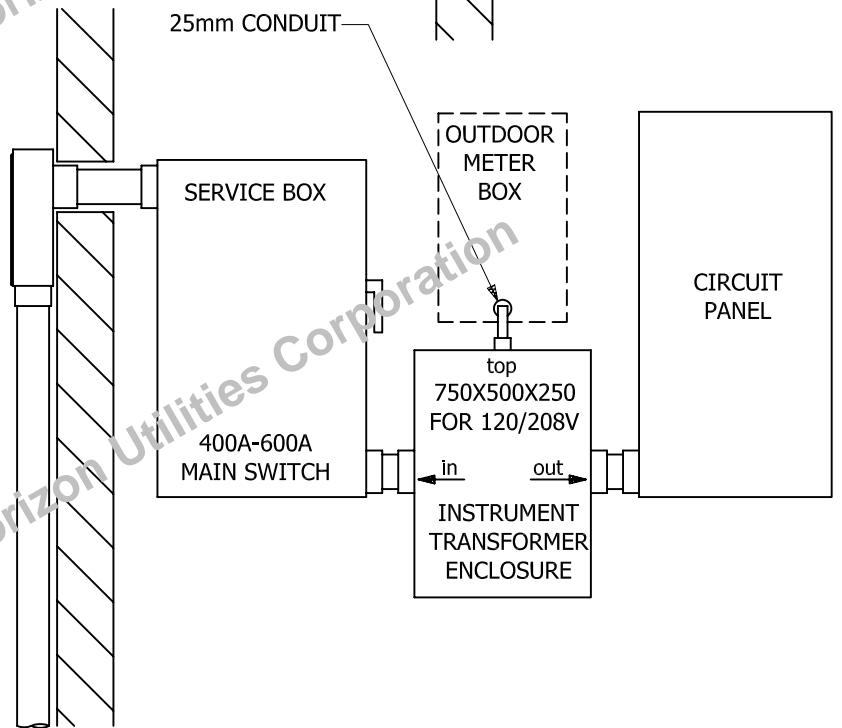
COIL BOX DIMENSIONS (IMPERIAL)

UP TO 400A	36X36X10
400 TO 600A	48X48X10



NOTES:

- HORIZON UTILITIES CORPORATION APPROVED OUTSIDE METER ENCLOSURE MAY BE PURCHASED FROM HORIZON UTILITIES CORP. OR SOME ELECTRICAL DISTRIBUTORS-REFERENCE HYDEL CATALOGUE NUMBER 74820585 OR HONI SPECIFICATION NUMBER DL27135D09
- INSTRUMENT TRANSFORMER ENCLOSURE SHALL BE EQUIPPED WITH:
 - REMOVABLE INNER BACKPLATE
 - HINGED DOORS FULL-HEIGHT
 - PROVISION FOR PADLOCK AND SEAL
 - MADE OF 16 OR 14 GAUGE STEEL
- DELIVER BACKPLATE TO HORIZON UTILITIES CORPORATION METER SERVICES AT 38 REBECCA ST
- EXTEND A FULL-SIZED NEUTRAL SUPPLY CONDUCTOR FROM THE SERVICE BOX TO THE INSTRUMENT TRANSFORMER ENCLOSURE (4-WIRE SERVICES ONLY).
- SUPPLY CABLE TO BE CONNECTED RED, BLACK, BLUE, LEFT TO RIGHT INSIDE MAIN SWITCH AND X0-WHITE, X1-RED, X2-BLACK, X3-BLUE AT THE TRANSFORMER (4-WIRE SERVICES ONLY).



DRAWING STATUS	BY	DATE DD/MM/YY
DRAWN:	JM	27/06/07
CHECKED:	AV	15/09/05
APPROVED:	CR	15/09/05

TRANSFORMER-TYPE METER INSTALLATION

100A - 600A - 600V - DELTA
 400A - 600A 347/600V WYE
 400A - 800A 120/208V

LINEAR DIMENSIONS SHOWN IN MILLIMETERS

DRAWINGS NOT TO SCALE

DRAWING #

27-09

REFERENCE DRAWINGS:

SHEET#

1

REVISION#

0