

Wise Water Use Begins In the Home



The average Canadian uses about 329 litres of water per day. Canadians use a higher ratio of water in their homes per person than most other countries in the world.

Based on the three rules of water conservation – reduce, repair and retrofit – a typical household can reduce water consumption by 40% or more, with little or no effect on lifestyle

NEED MORE INFO *about Water Leaks in Your Home?*

Call our customer service representatives
Monday to Friday
8:30 am - 4:30 pm
905-546-4426

or visit our web site at
www.hamilton.ca/water

AUGUST 2011
PW-WW-CS-CE-V-011-001



Hamilton
Public Works

IS YOUR MONEY LEAKING AWAY?

*Save Money by Discovering
Water Leaks in your Home*



Hamilton
Public Works

DON'T LET YOUR MONEY DRAIN AWAY

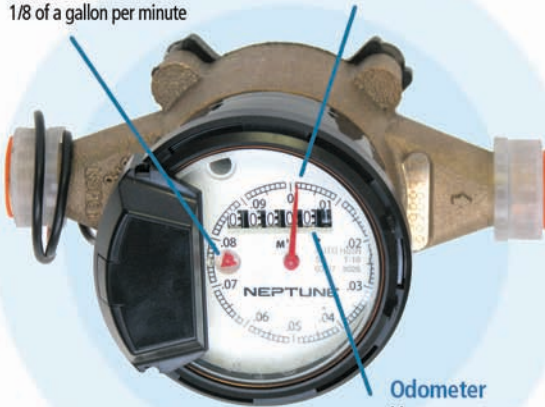
Know Your Water Meter

Knowing how to read your water meter will allow you to monitor your own water use and detect any water leaks in your household plumbing. Your water meter measures in cubic metres and displays your total water use to the nearest tenth of a cubic metre, similar to the odometer in your car measuring the distance you have traveled. Every 0.1 cubic metre (100 litres) of water consumed causes the sweep hand to make one complete turn and the total to increase by 0.1 cubic metres.

Low Flow Indicator
Indicates low flow leaks to 1/8 of a gallon per minute

Sweep Hand
One complete turn equals 0.1m or 22 gallons

Odometer
Measures water that is consumed



MONITORING WATER USE

- Monitor your water use over a period of time by taking the odometer reading at the beginning and end of the period. The difference in the readings is your consumption for that period
- Calculate how much water is used by household appliances and activities. Record the odometer reading before and after the activity, the difference is your consumption
- Turn off all taps and hoses while you complete the test

How to Discover Water Leaks In Your Home

- 1 Locate the low flow indicator or sweep hand on the water meter face.
- 2 Turn a tap on and run the water slowly. Look at the low flow indicator and observe it rotating. Turn the tap off.
- 3 Go around the house to ensure that you are not using water. Turn off all taps, don't use any water and check to ensure any outside hoses are turned off.
- 4 Go back to the water meter and observe the low flow indicator - it should not be rotating.
- 5 If the low flow indicator is not rotating, you do not have a leak.
- 6 If the low flow indicator is rotating, you may have a leak.

Note: You may also wish to consider contacting a qualified tradesperson to assist in determining and repairing any fixtures that are not functioning properly.

CHECK YOUR TOILET FOR LEAKS

- Put a small amount of food colouring in the toilet tank
- Wait about 10 minutes, and then check for the colouring in the toilet bowl. If there is, your toilet flapper could be leaking. This is a relatively simple and inexpensive part to replace
- While the toilet top is removed, look to see if the water level is close to the overflow pipe (a plastic pipe, with an open end just below the top of the tank)
- If the water level is close, or overflowing into the pipe, this could be where water is leaking
- If the tank water level is too high, you need to adjust the ball valve which controls the amount of water in your toilet tank

TESTING YOUR WATER METER FOR ACCURACY

First, use your water meter to evaluate your plumbing fixtures for leaks. Then, if you believe the water meter is the cause of your high water use readings, you can apply in writing to have the water meter tested for accuracy. When applying, include your name, address, and telephone number and forward your request to:

City of Hamilton, Meter Operations
330 Wentworth Street North
Hamilton, Ontario L8L 5W2

If the testing confirms the water meter is functioning accurately, it is the customer's responsibility to pay for the test. If the testing confirms the water meter is functioning inaccurately, it is the City's responsibility to pay for the test and a discount adjustment will be applied to the customer's water bill.

Please contact the Meter Operations Section at 905-546-CITY (2489) for more information regarding the water meter testing procedures and the current rate for testing.



DRIP, DRIP, DRIP... WATER LEAKING FACTS

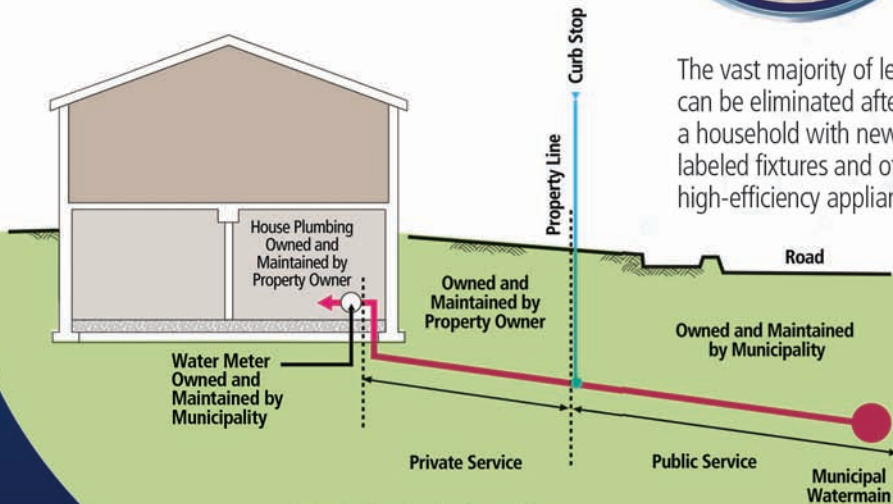
TOILETS

- Toilets can silently leak up to 45 litres of water per hour or 394,000 litres of water per year

WATER TAPS

- A leaky tap that drips once per second can waste 10,000 litres of water in 1 year
- Leaking hot water taps may also increase energy costs

10% OF HOMES that have
Leaks **WASTE 340 LITRES** of
Water or more **PER DAY**



Private Service is the portion of the water pipe located on your property between the building and the property line.

Public Service is the portion of the water pipe located on the street right-of-way between your property line and the watermain.



The vast majority of leaks can be eliminated after retrofitting a household with new WaterSense labeled fixtures and other high-efficiency appliances.



Construction Season is from April to November. Public Service Replacements are scheduled during this time. Financial constraints and inclement weather may impact the schedule.